



# Agenda



- **Genero Studio 2.20**
  - New features
- **Discussion points**

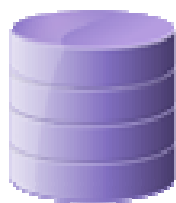
# Genero Studio 2.20

**Major release**

# Genero Studio Components



Edit code



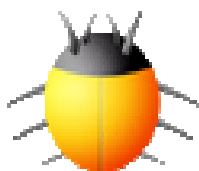
DB Meta schema



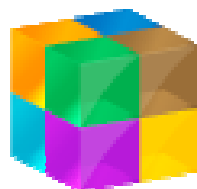
Design Forms



Create Reports



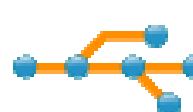
Debug apps



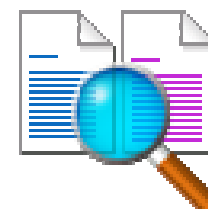
Manage Projects



Files & Dirs



Team work (SCM)



Diff



App Generator



SOA & WS



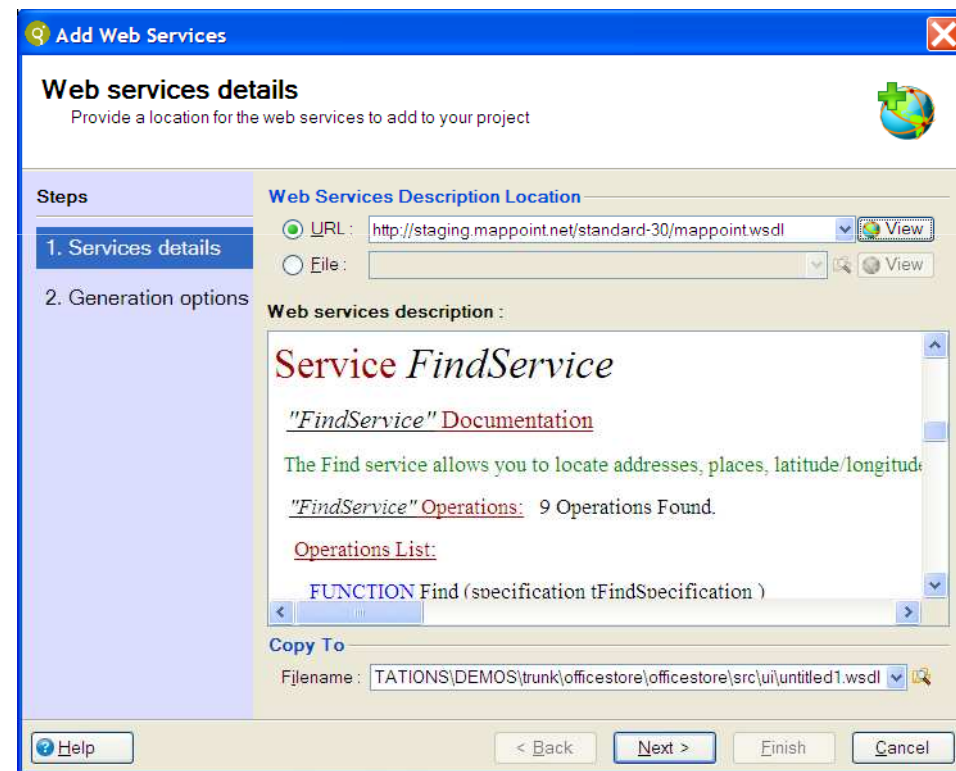
Profiler



Help

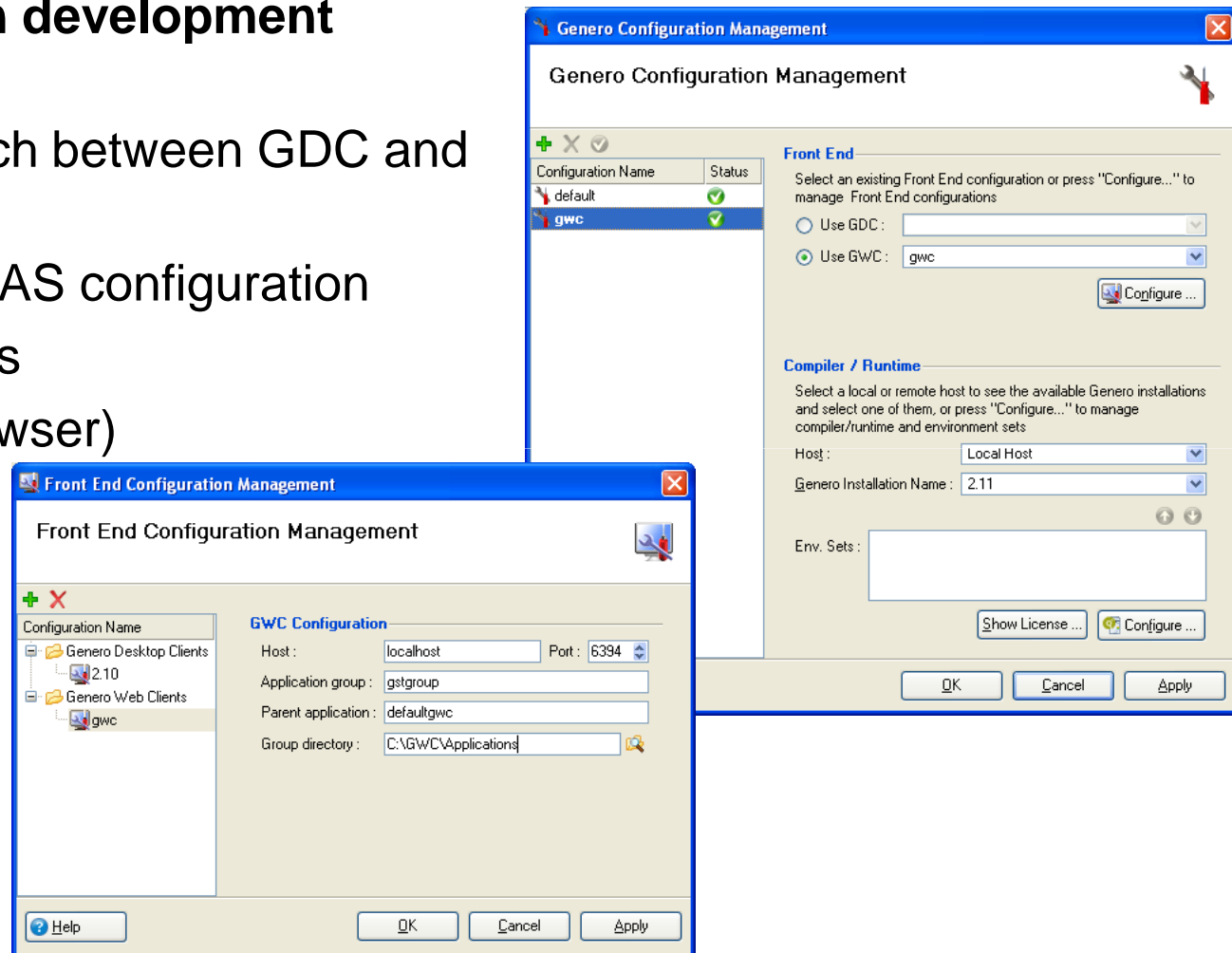
## ➤ Web Services (Since 2.10)

- View services documentation from an URL
- Use services in projects (Consume Service)



## ➤ Web application development (Since 2.10)

- Choose/Switch between GDC and Web
- Automated GAS configuration
- Preview forms
- Run (in a browser)
- Debug



## ➤ General

- Docking improved
- Task manager
  - Genero Studio tasks in progress
  - Genero applications being run
- Genero 2.20 support (Code Editor, Databases, Forms)
- Save all documents dialog



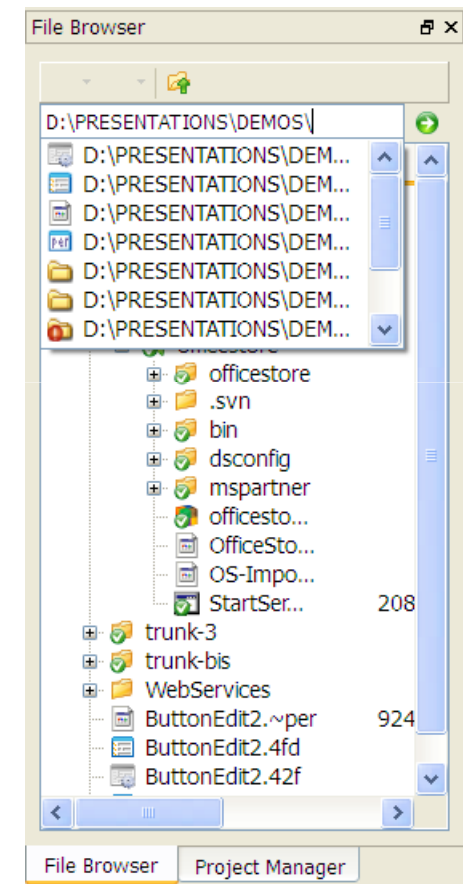
## ➤ Project Manager

- Build performance improved
  - Multi-processor support (multiple tasks run simultaneously)
- Support for Informix SE databases (FGLRESOURCEPATH)
- Run simultaneously multiple Genero applications
- Project database
  - TODO, BUG lists extracted from source code
  - Function search in the current project
- Command line build of project files (.4pw)
  - gsmake

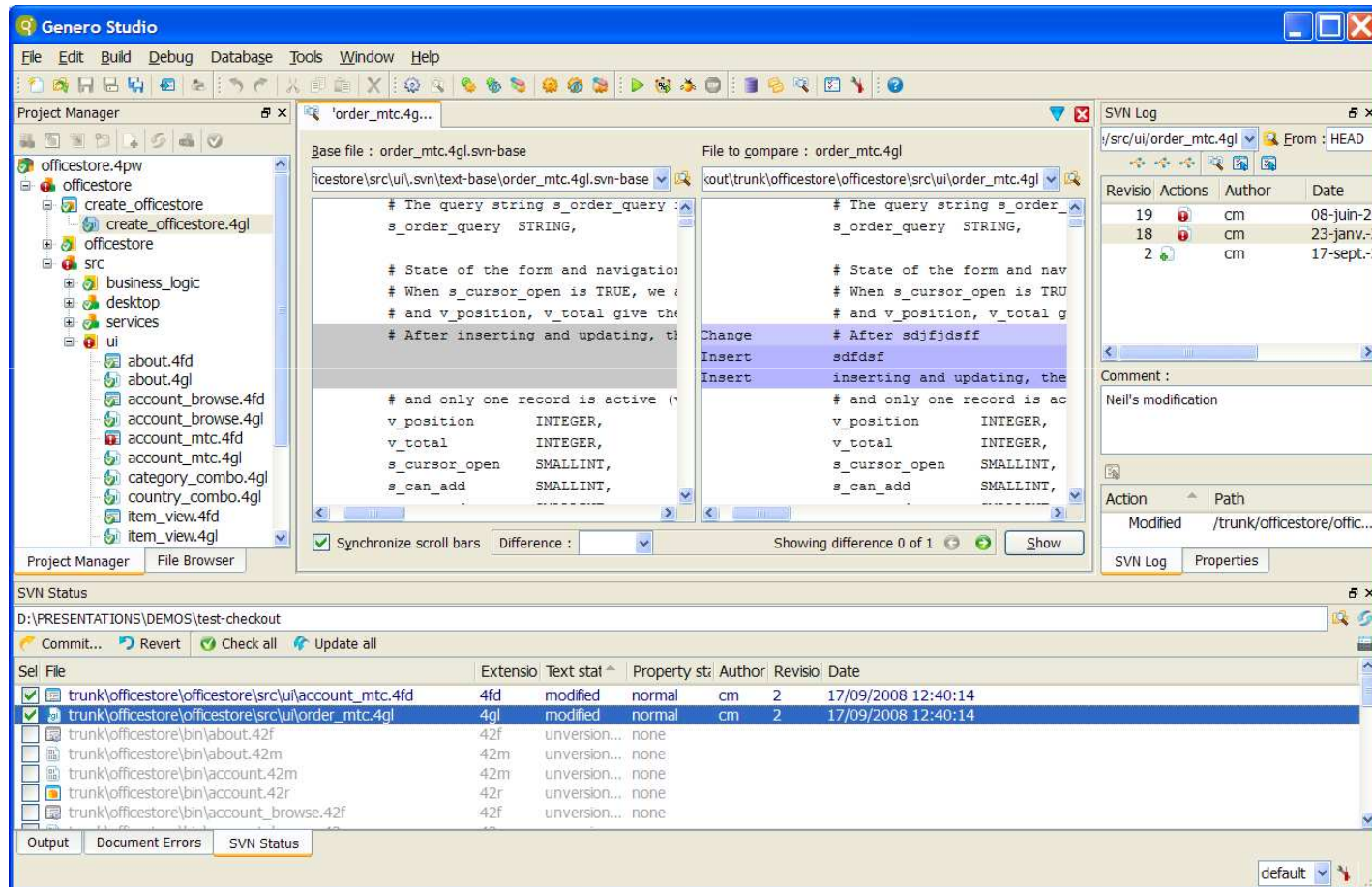


## ➤ File Browser

- History with back/Forward navigation
- Completion of path while entering the folder
- Files and Folders in the same view
- Integration of SCM



## ➤ Source Code Management (Subversion)



## ➤ Source control management (Subversion)

- Use of docking views instead of dialogs
  - Status & Log view available at the same time
  - Additional operations like diff, directly opening files are now possible
- Full support of Subversion
  - Advanced operations: Copy, Merge...
  - Bug tracking interface
- Repository Browser
  - View the repository (checkout avoided)
  - Direct operations on the repository (Log, Copy, Import, Open...)
- Integration in File Browser
  - Operations on directories

## ➤ Code Editor

- Improved performances: speed and memory usage
- Support for more than 60 languages

## ➤ Debugger

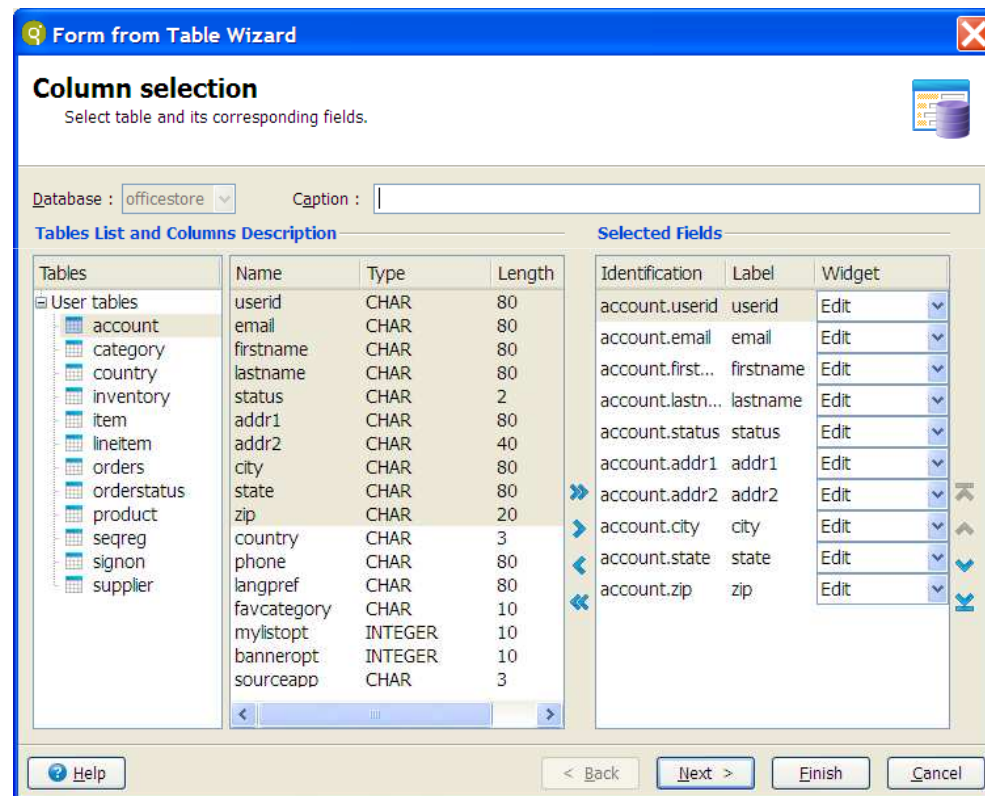
- Simplified start/stop/interrupt commands
- Debugging in source files directly when sources are unchanged
  - A read-only copy of the source code is created on change, to be able to continue debugging
- Indicator to locate modified variables in the variable list
- Load/Save debugging scripts (sequence of commands)

## ➤ Meta Schema Manager

- Database schema information extracted from existing database (as in the previous Database Browser module »)
  - Tables, Fields, Types, PK/FK Relations if any
  - Genero view of the world: SERIALs, INTEGER...
- Editable information attached to this schema
  - Additional PK/FK Relations (when not described at DB level)
  - Field labels (Example: « First name » for order\_fname)
  - Constraints (Value list, range...)
- Edited data are kept when resynchronizing with the DB schema

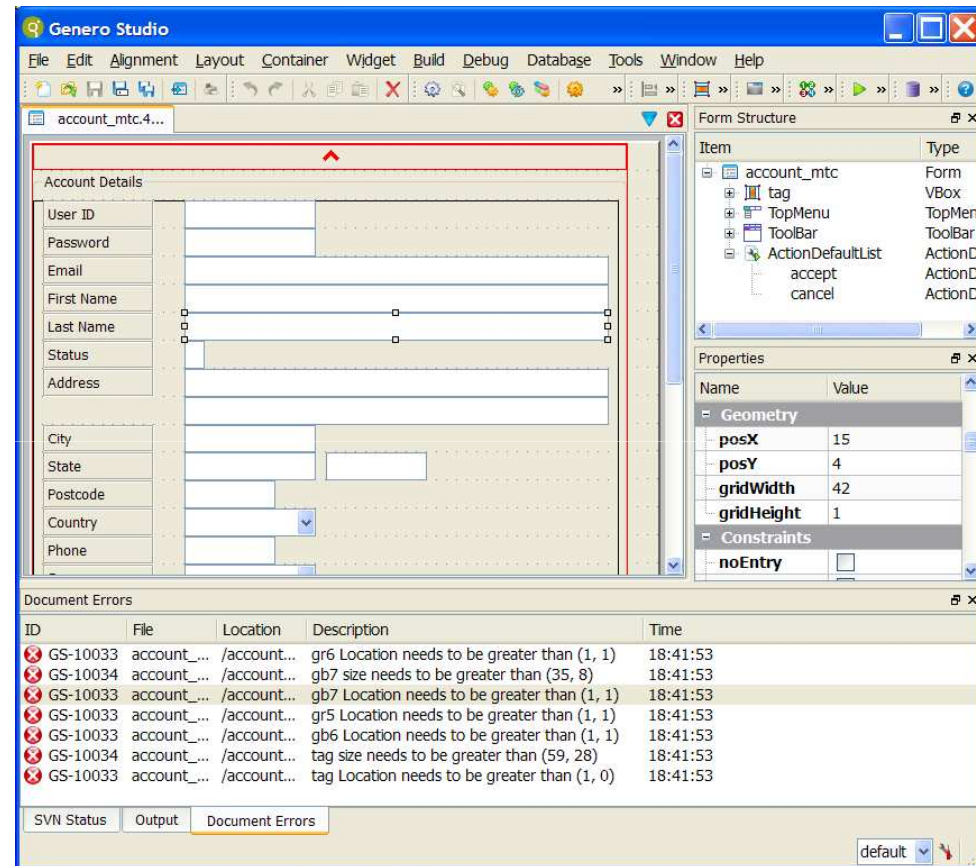
## ➤ Form Designer

- Takes advantage of the Meta Schema information from creating new forms (Form from Table assistant)



## ➤ Form Designer

- Auto validation:
  - Errors/Hints displayed as the document is modified
- Structure view including:
  - TopMenu,
  - Toolbar,
  - Action Defaults
  - Screen records



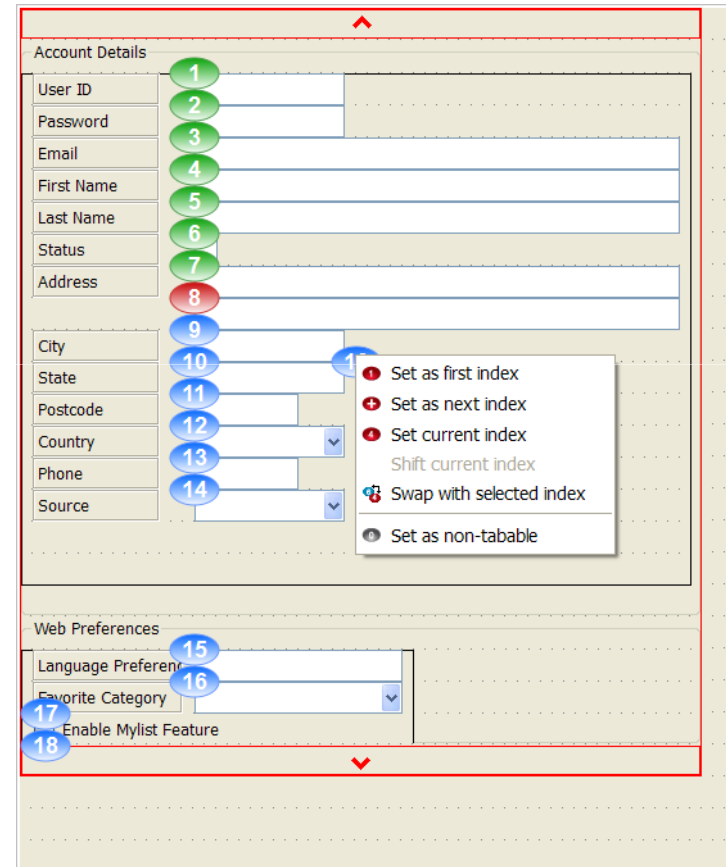


## ➤ **Form Designer**

- Turn a field to a table column or Matrix (and vice versa)
- Transform a container to another container type
  - Available for Table, Grid, Tree, ScrollGrid
- HBOX/VBOX container
- Drag&Drop within structure view
- Multiple selection
- Search/Replace Widgets properties in forms
- Genero 2.20 support
  - Tree widget, Phantom...

## ➤ Form Designer

- Tab Index editing improved



The screenshot displays the Genero Studio Form Designer interface. A form is shown with two sections: "Account Details" and "Web Preferences". The "Account Details" section contains fields for User ID, Password, Email, First Name, Last Name, Status, Address, City, State, Postcode, Country, Phone, and Source. The "Web Preferences" section contains fields for Language Preference, Favorite Category, and Enable Mylist Feature. Each field is assigned a tab index, indicated by a numbered circle next to it. A context menu is open over the "City" field (tab index 10), showing options for editing the tab index: "Set as first index", "Set as next index", "Set current index", "Shift current index", "Swap with selected index", and "Set as non-tabable".

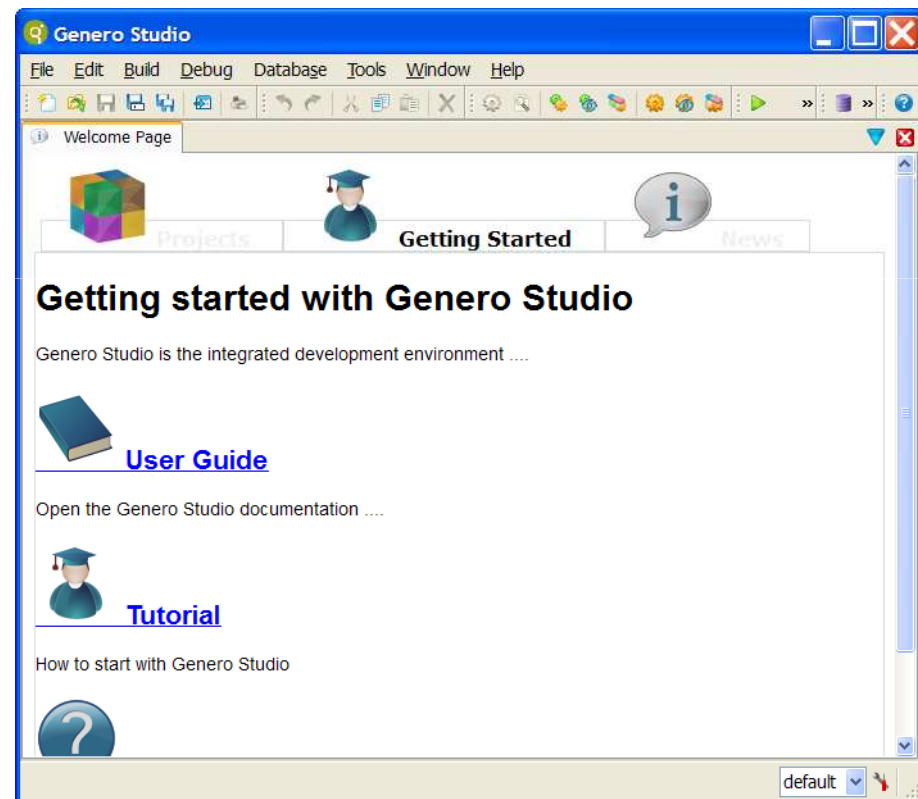
Field	Tab Index
User ID	1
Password	2
Email	3
First Name	4
Last Name	5
Status	6
Address	7
City	8
State	9
Postcode	10
Country	11
Phone	12
Source	13
Language Preference	14
Favorite Category	15
Enable Mylist Feature	16

## ➤ Team development

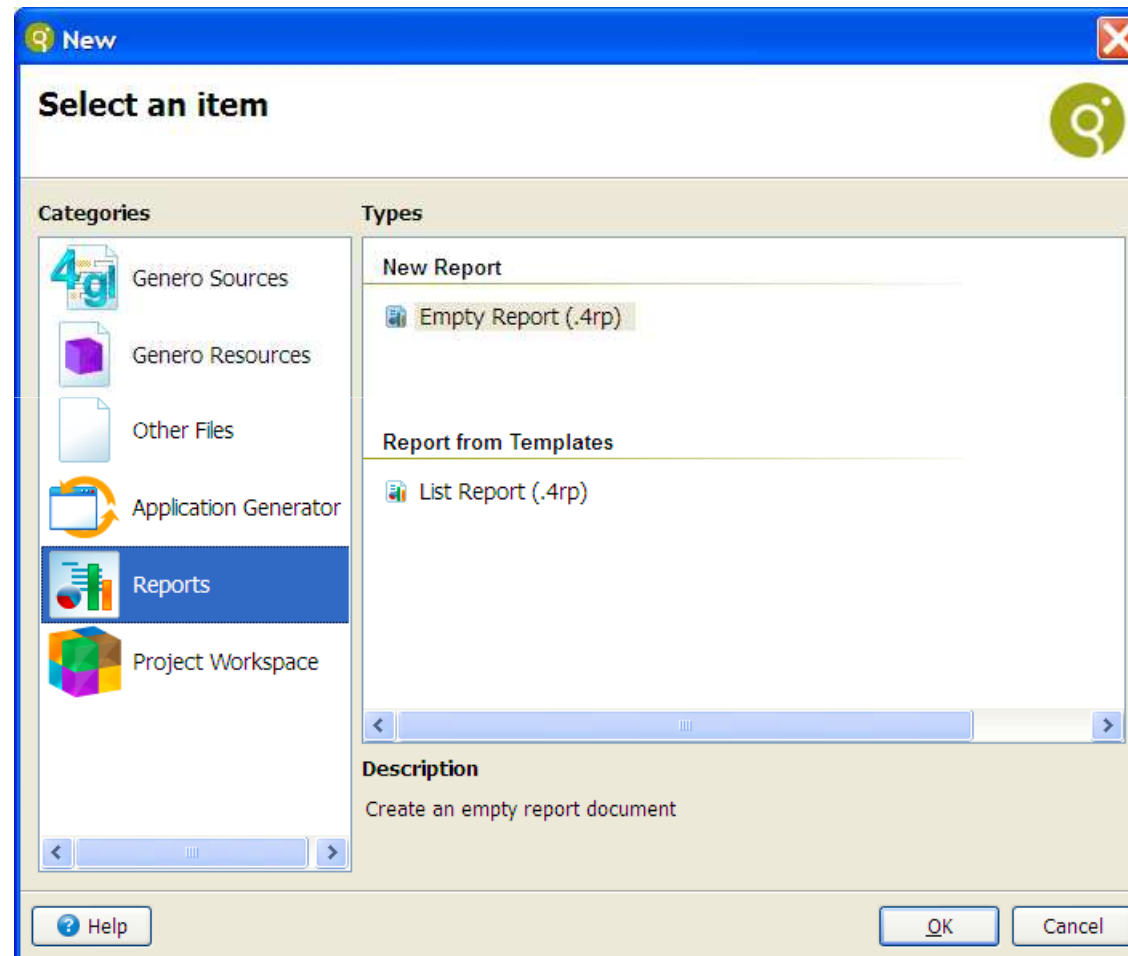
- SSH connectivity for Studio server
  - Improved User rights management on the server side

## ➤ Start page

- Recent projects, Files
- Tutorials and samples
- RSS feeds



## ➤ Report Writer integrated



## ➤ Report Writer integrated

- A single consistent development environment that suits to Genero Report Development
  - Report Designer included
  - Running / debugging reports
    - Running reporting from the BDL program
    - Quick run from previous report data
  - Assistants to create new reports
    - Data source builder to produce the report data (Genero BDL code)
    - Building report presentation using predefined reports

## ➤ Installation & Configuration

- Assisant to configure Genero Studio
  - Search installed products and auto-configure (From Disk, From installed packages)
  - Add newly installed FGL, GAS, GDC... later on

## ➤ All-in-one Package

- Development: GST, FGL, GWS, GAS, GRE, GDC, GRV, Demos
- Based on MSI on Windows

# Genero Studio

## Discussion points



*Intelligent Business Application Infrastructure*

# Q and A



Genero®



Genero®  
studio



Genero®  
rw



Genero®  
db

Powered by  
ANTs

**Christophe Meyer**  
**(cm@4js.com)**

**Strasbourg, France**

